

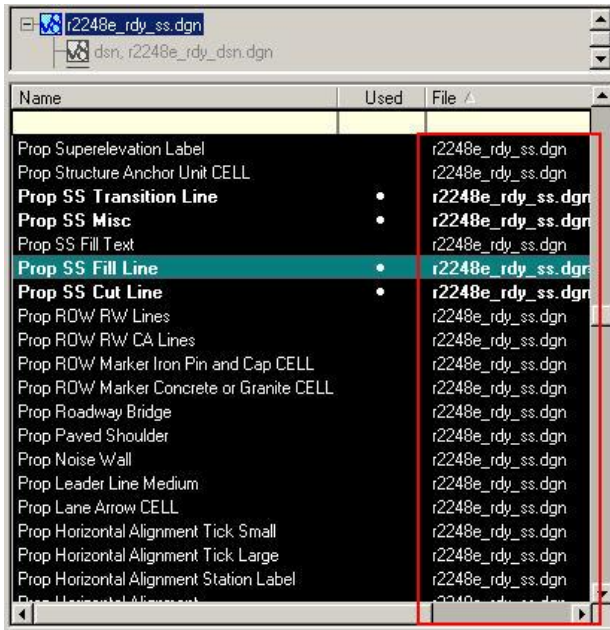
17_20 Plotting Used, and Unused Levels with iPlot Organizer

Question:

I am only using five levels turned on or off for plotting in my DGN file. Why are there more than 50 levels in the same DGN file being turned on for plotting in my iPlot Organizer IPS file?

Answer:

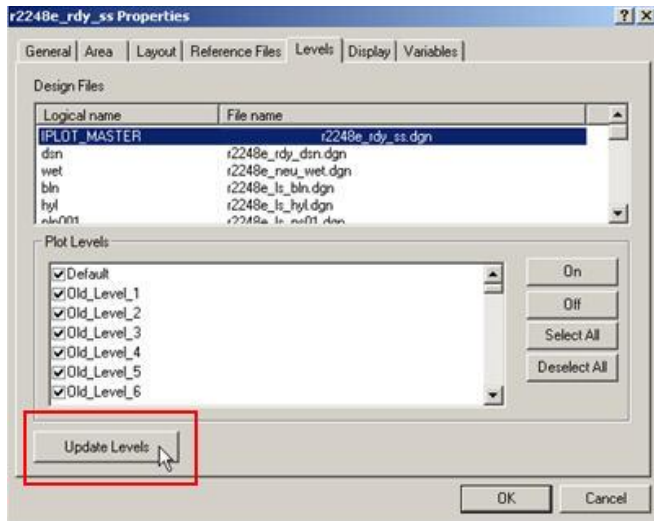
After talking it over with Ed Williams of NCDOT CADD Services, a simple explanation for this condition is iPlot is listing all levels saved in the actual DGN file, regardless of whether they are used or not.



| Name | Used | File |
|--|------|-------------------|
| Prop Superelevation Label | | r2248e_rdy_ss.dgn |
| Prop Structure Anchor Unit CELL | | r2248e_rdy_ss.dgn |
| Prop SS Transition Line | • | r2248e_rdy_ss.dgn |
| Prop SS Misc | • | r2248e_rdy_ss.dgn |
| Prop SS Fill Text | | r2248e_rdy_ss.dgn |
| Prop SS Fill Line | • | r2248e_rdy_ss.dgn |
| Prop SS Cut Line | • | r2248e_rdy_ss.dgn |
| Prop RDW RW Lines | | r2248e_rdy_ss.dgn |
| Prop RDW RW CA Lines | | r2248e_rdy_ss.dgn |
| Prop RDW Marker Iron Pin and Cap CELL | | r2248e_rdy_ss.dgn |
| Prop RDW Marker Concrete or Granite CELL | | r2248e_rdy_ss.dgn |
| Prop Roadway Bridge | | r2248e_rdy_ss.dgn |
| Prop Paved Shoulder | | r2248e_rdy_ss.dgn |
| Prop Noise Wall | | r2248e_rdy_ss.dgn |
| Prop Leader Line Medium | | r2248e_rdy_ss.dgn |
| Prop Lane Arrow CELL | | r2248e_rdy_ss.dgn |
| Prop Horizontal Alignment Tick Small | | r2248e_rdy_ss.dgn |
| Prop Horizontal Alignment Tick Large | | r2248e_rdy_ss.dgn |
| Prop Horizontal Alignment Station Label | | r2248e_rdy_ss.dgn |
| Prop Horizontal Alignment | | r2248e_rdy_ss.dgn |

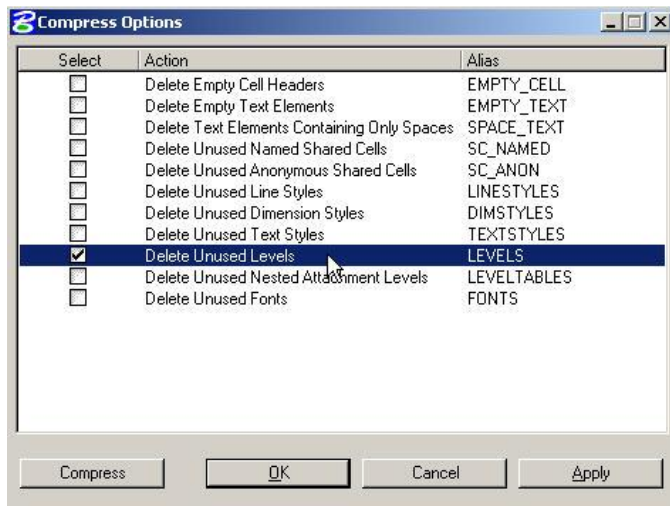
It is important to distinguish the difference between turning on levels for plotting and used/unused levels. Here are some of the default behaviors of iPlot and iPlot Organizer when it comes to plotting levels.

1. All used and unused levels (element once used the level then the element got deleted), will carry over into iPlot and iPlot Organizer.
2. All used and unused levels that are turned on in the DGN file will be turned on for plotting, the instance the plot files are created.
3. All used and unused levels that are turned off in the DGN file will be turned off for plotting, the instance the plot files are created.
4. All new levels added to the DGN file after the plot files have been created are turned on for plotting.
5. All new levels added to the DGN file after the plot files have been created are turned on or turned off for plotting according to the state of the DGN file ONLY after the levels have been updated.



Note that #4 and #5 are common with Hydro's DRN files.

To resolve issues with unused levels being turned on for plotting, even though they have no effect but just clutter the level list, as an option checked on "Delete Unused Levels" under the Microstation File >>> Compress >>> Options menu item.



Now every time the DGN file is compressed, such as in the case of clicking on the RD_DSN Exit button, all unused levels in the active DGN file will be deleted. Note that this setting change is stored in the UPF file and will reset back to default each morning when logging into your workstation if not stored in the master .BAK.

Also to avoid some of the unused level being saved in the actual DGN file, when possible, we stress the importance of using the NCDOT Design File Generator and creating a brand new file, instead of copying an old file and renaming it.